

Bighorn

PROPERTY FACT SHEET



Where is Revelstoke?

The city of Revelstoke is located in south-eastern British Columbia, Canada's most western province, between the Monashee and Selkirk Ranges, in the North Columbia Mountains.

The new Revelstoke Mountain resort is the only ski resort in the world to offer lift, cat and heliskiing from one village base.

How to get here

Scheduled regional service with national and international connections is available in the nearby centers of Kelowna and Kamloops, with ground transport to Revelstoke. International access is available to gateway airports in Calgary and Vancouver, transferring to regional airlines, private jet and/or ground transport.

Revelstoke's airport has a 1,460-meter paved runway, terminal building, fueling facilities and hangars servicing small planes and helicopters. Charter aircraft and helicopter services are available, with taxi service to town (reserve in advance or call from the airport).

The Bighorn staff are happy to assist clients with their travel arrangements to Canada and onwards to the property, via luxury ground transport, private jet or helicopter.

What we include in your stay

- 7 nights luxury accommodation for up to 16 guests on your chosen dates.
- Exclusive use of the lodge and its facilities.
- Dedicated service from a professional team of chefs, managers and housekeepers.
- Breakfast and afternoon tea daily.
- Children's catering available.
- Canapés daily.
- Mouth watering dinners prepared by the chef (6 nights).
- Carefully selected house wines.
- An open spirit bar and a range of soft drinks.
- Luxury bath products.
- Fresh flowers and daily newspapers and magazines via iPad.
- In-resort transport.

We can also arrange:

- Private or scheduled flights.
- Use of airport lounges worldwide.
- Resort transfers by taxi or helicopter.
- Car hire.
- Comprehensive winter sports travel insurance.
- Special family and corporate events.
- In-property equipment fitting and lift passes.
- Private heli-skiing and cat-skiing reservations.
- Ski lessons and guiding from hand-picked guides.
- Extensive in-resort activities.
- A la carte wines and champagnes.
- In-house childcare.
- In-house massage, spa and beauty therapy.

What the house offers

- 8 sumptuous staterooms with balcony, satellite TV and Netflix.
- Triple height Great Room with log fire
- Dining room to seat 16, with full business conference facilities.
- Bar and pool room with TV, the latest games consoles and games library.
- Private cinema with extensive movie library.
- Wifi internet access and entertainment system throughout the house.
- State-of-the-art security system.
- Guest computer station and study.
- Wellness area with exercise pool, gym, sauna and massage rooms.
- Outdoor hot tub with views over the Columbia River and Monashee Mountains.
- Private helipad.
- Ski room and service area.

Pricing

Pricing starts at CAD 65,000 per week for exclusive use of the house for up to 16 guests.

Contact

Telephone:

Canada: +1 77 878 68 258

UK: +44 (0) 203 432 0726

Email: sales@bighornrevelstoke.com

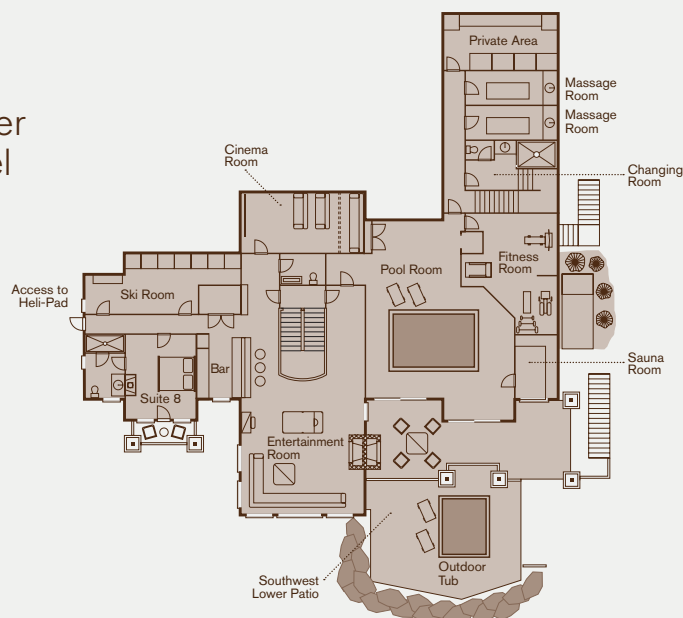
Website: www.bighornrevelstoke.com

Please contact us for terms and conditions.



1

Lower Level



FLOORPLANS

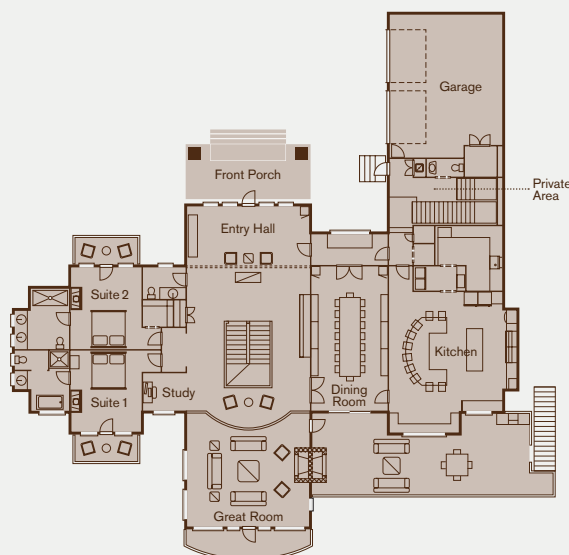
All Bedrooms come complete with iPod docking stereo system, widescreen television, netflix, wi-fi internet connection and telephone.

Suite 8

- Super King or two Twin Bed
- Fitted Wardrobe
- Separate Shower
- Private balcony with mountain and river view
- Gas Fireplace

2

Main Level



Suite 1

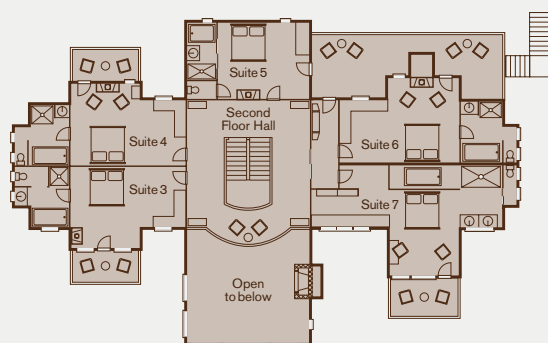
- King or two Twin Bed
- Fitted Wardrobe
- Private balcony with mountain and river view
- Soaker Tub with view
- Separate Shower
- Gas Fireplace

Suite 2

- King or two Twin Bed
- Walk-in Wardrobe
- Private balcony with forest view
- Double Shower
- Gas Fireplace

3

Upper Level



Suite 3

- Super King or two Twin Bed
- Fitted Wardrobe
- Private balcony with mountain and river view
- Soaker tub with view
- Separate Shower
- Gas fireplace

Suite 6

- Super King or two Twin Bed
- Fitted Wardrobe
- Shared Balcony, forest view
- Soaker Tub
- Separate Shower
- Gas fireplace

Suite 4

- Super King or two Twin Bed
- Fitted Wardrobe
- Private balcony, forest view
- Soaker Tub
- Separate Shower
- Gas fireplace

Suite 7

- Super King or two Twin Four-poster Bed
- Walk-in Dressing Room
- Private balcony with mountain and river view
- Open bathroom, with separate shower and separate toilet
- Separate Sunken Tub

Suite 5

- Super King or two Twin Four-poster Bed
- Fitted Wardrobe
- Shared Balcony, forest view
- Soaker Tub
- Separate Shower
- Separate Toilet
- Gas fireplace