

# YOTELPAD

PARK CITY



[www.YOTELPADParkCity.com](http://www.YOTELPADParkCity.com)

# Room Types

Room Description	Room Code	SQFT	Max Occupancy	Beds	Features
<a href="#">Standard StudioPAD</a>	STST	338	4	Queen murphy, twin bunk	Full or Partial Village or Unita View
<a href="#">Deluxe StudioPAD</a>	DXST	338	4	Queen murphy, twin bunk	Full or Partial Village or Unita View, Partial Balcony
<a href="#">StudioPAD Plus</a>	STUP	406	4	Queen murphy, twin bunk	Full or Partial Village or Unita View
<a href="#">Standard One-Bedroom PAD</a>	ST1B	517	4	Varies by unit; Queen & queen murphy or Queen murphy and twin bunk	Full or Partial Village or Unita View, some have balcony
<a href="#">Premium One-BedroomPAD</a>	PR1B	526	6	Queen, queen murphy, twin bunks	Full or Partial Village or Unita View, some have balcony
<a href="#">Two-BedroomPAD</a>	2BDR	603	7	Queen, twin bunk + day bed, queen murphy	Unita View

# AMENITIES IN ALL ROOMS

- Stainless steel dishwasher
- Stainless steel microwave
- Stainless steel two-burner induction cooktop
- Nespresso Espresso Maker
- Full-size stainless-steel refrigerator
- Iron & Ironing Board
- Hair Dryer
- In-room safe
- Samsung Smart TV/Cable
- Clock radio
- Quartz countertops and backsplash
- Heated towel rack
- Hotel-wide high-speed Wi-Fi
- Convertible coffee//kitchen table



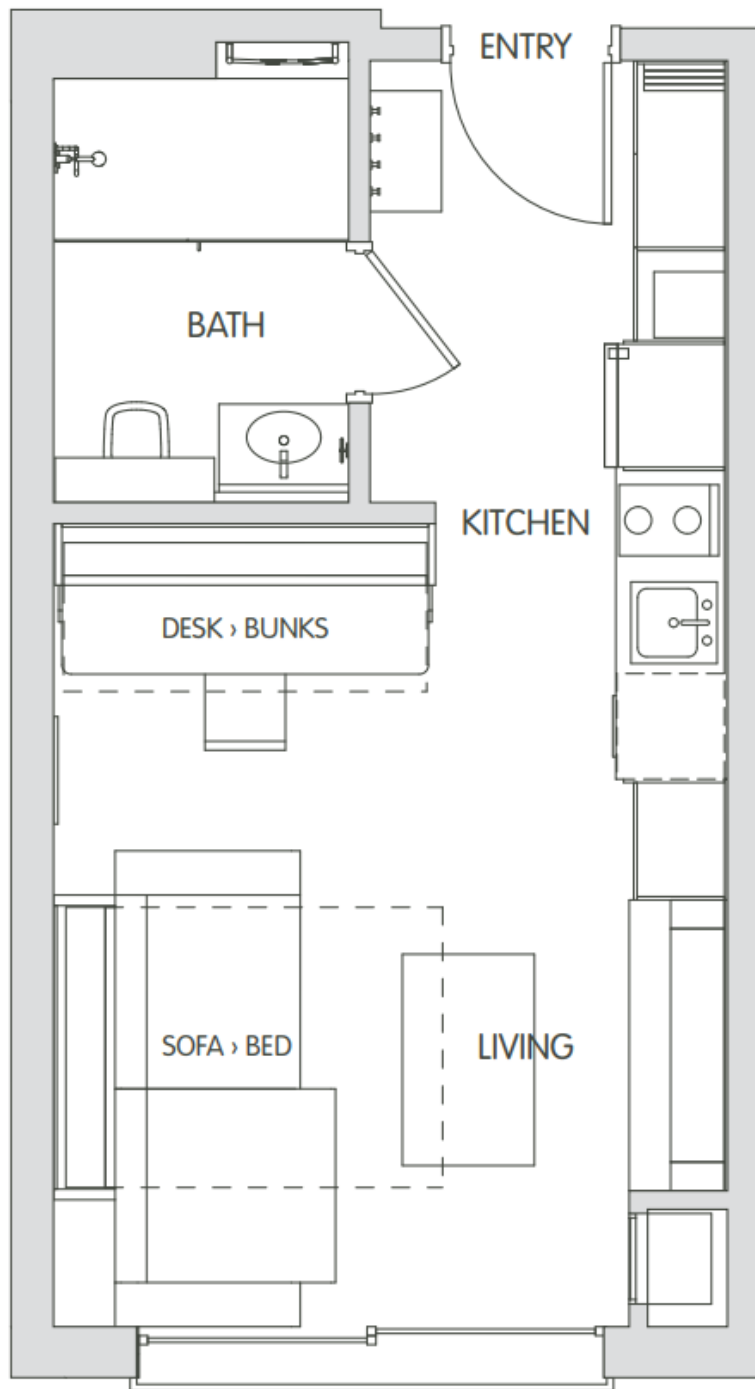
# Standard StudioPAD

- 338 sq. ft.
- Units located between floors 1-4
- Offers full or partial views of Canyons Village or Unita Mountains
- Max Occupancy: 4



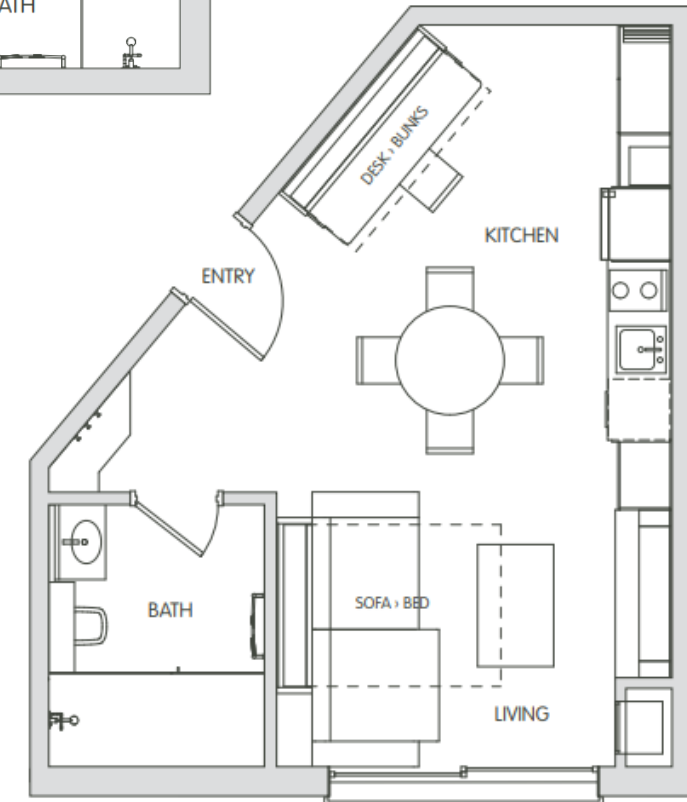
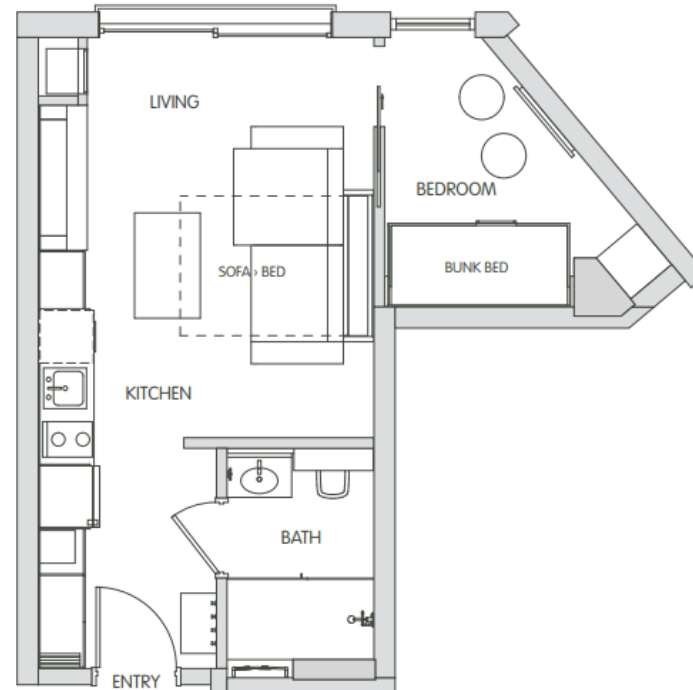
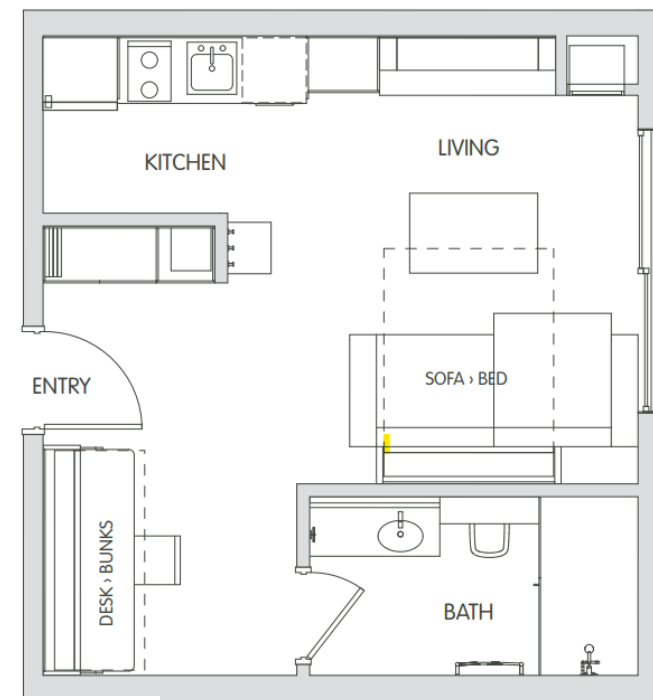
# Deluxe StudioPAD

- 338 sq. ft.
- Units located between floors 1-4
- Juliette/Partial Balcony
- Offers full or partial views of Canyons Village or Uinta Mountains
- Max Occupancy: 4



# StudioPAD Plus

- 406 sq. ft.
- Units located between floors 1-4
- Juliette/Partial Balcony
- Offers full or partial views of Canyons Village or Unita Mountains
- Max Occupancy: 4
- Room configurations vary



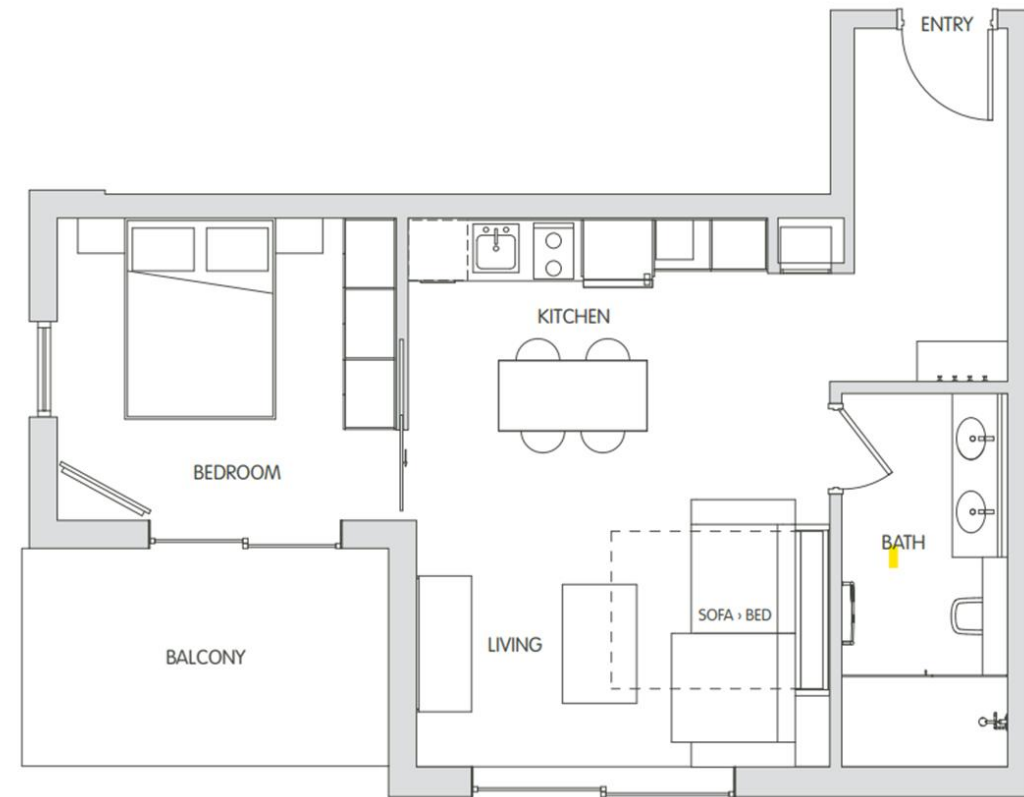
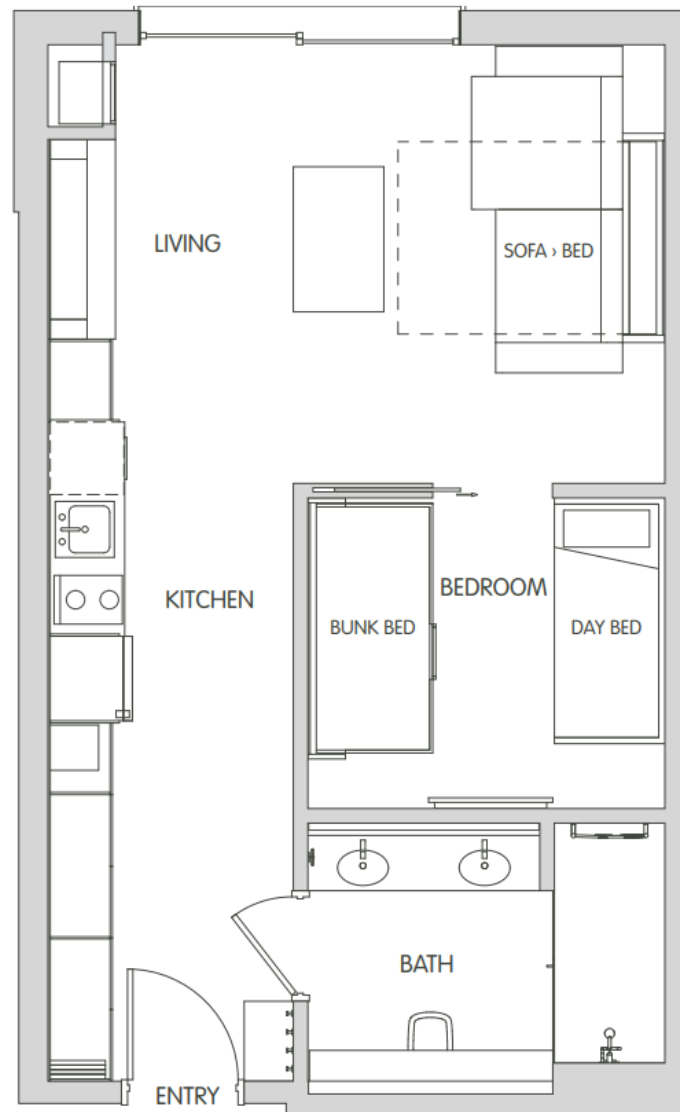
# Studio PADs

- Studio Category includes Standard, Deluxe and Plus room types.
- Primary differences:
  - Deluxe includes the option for a partial balcony
  - Plus includes the option for a larger room (max occupancy does not change)
  - View options are request and cannot be guaranteed



# Standard One-Bedroom PAD

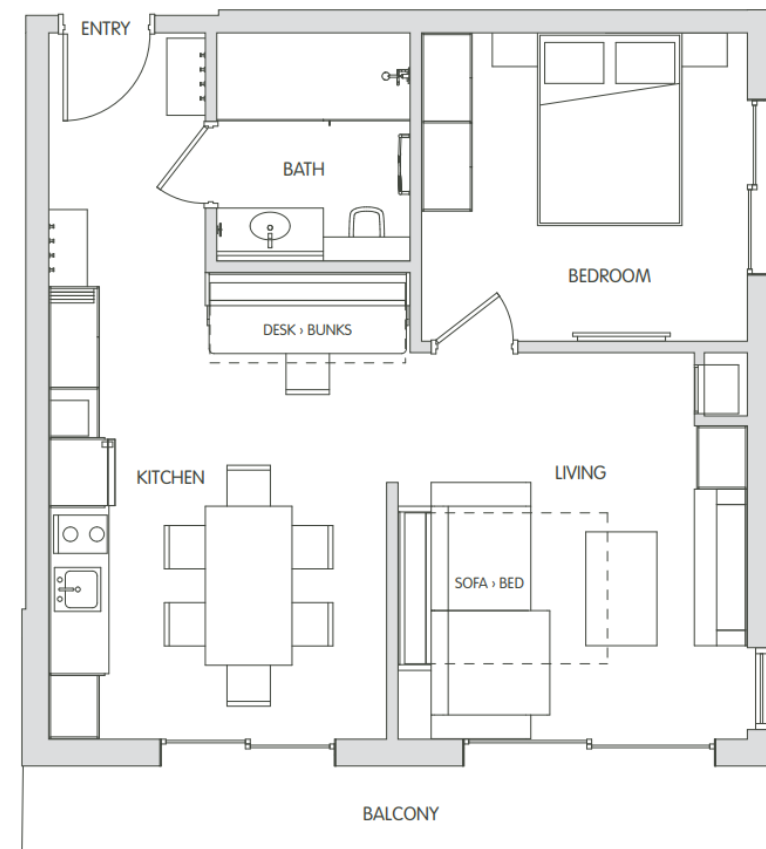
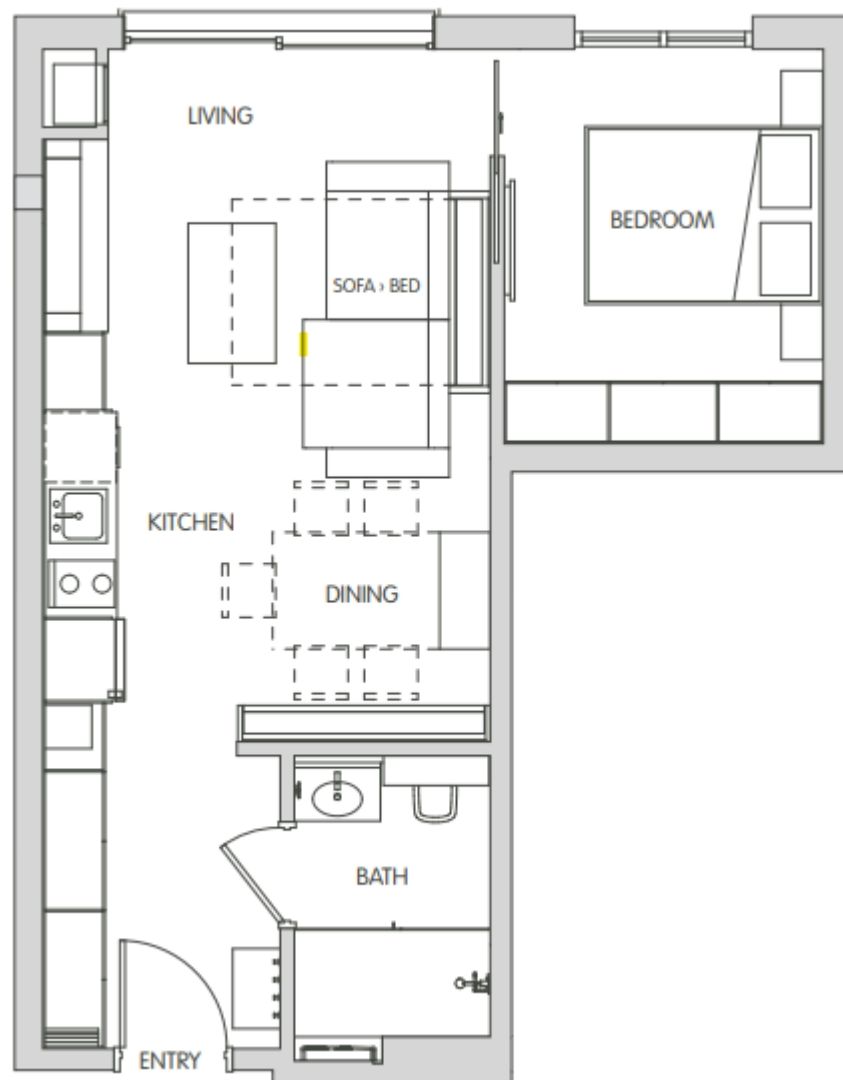
- 517 sq. ft.
- Units located between floors 1-4
- Offers full or partial views of Canyons Village
- Max occupancy: 4
- Room configurations vary
- Balcony can be requested, requests not guaranteed.





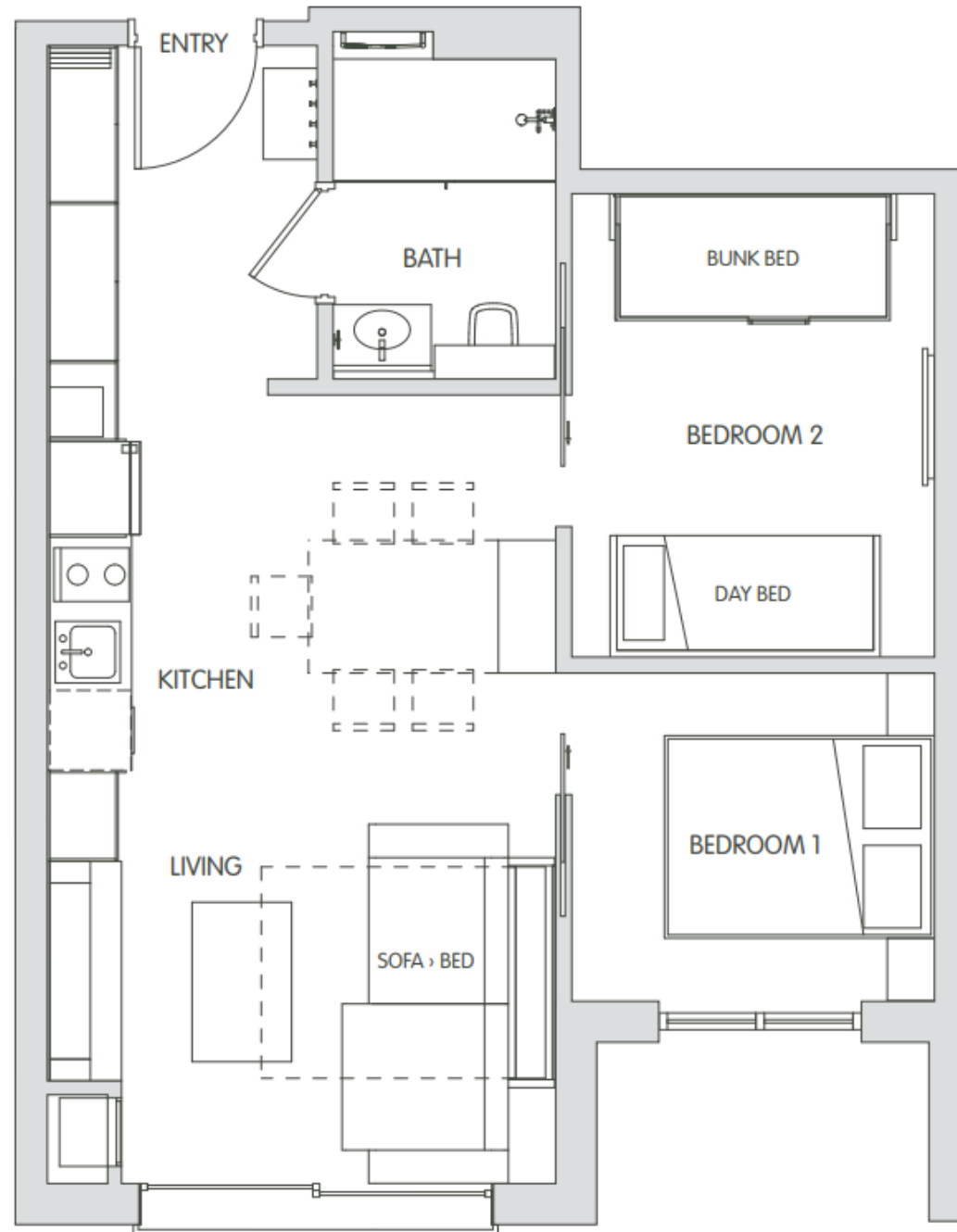
# Premium One Bedroom PAD

- 526 sq. ft.
- Units located between floors 1-4
- Offers full or partial views of Canyons Village
- Has full kitchen table
- Max Occupancy: 6
- Balcony can be requested, requests not guaranteed.



# Two Bedroom PAD

- 603 sq. ft.
- Units located between floors 1-4
- Offers full or partial views of Unita Mountains
- Has full kitchen table
- Max Occupancy: 7



# Bedroom PADs

- Bedroom category includes one-, two-bedroom units.
- Primary differences:
  - Number of bedrooms;
  - additional space
  - Two-bedroom units include permanent kitchen table. This feature is also included in select one-bedroom units.

